



Using a Laptop with the Touch Screen System



Fig1

www.tele-measurements.com

Tap screen to operate system

Sleep Mode Screen

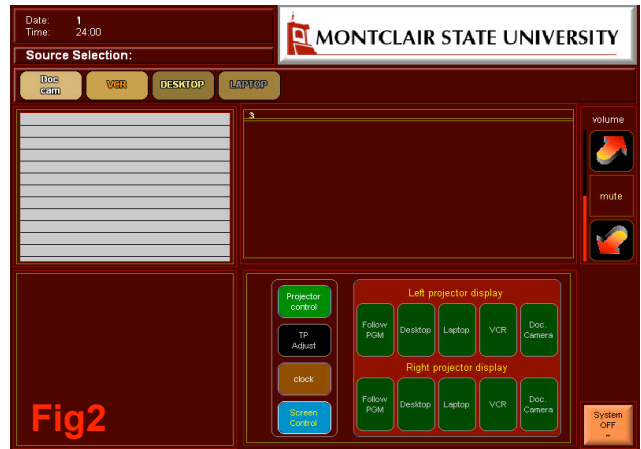


Fig2

Main Screen

PLEASE NOTE:

- **Be very patient with the touch screen system.**
- **If necessary wait a few minutes between command processes before touching the screen again.**
- **When the system is not responding wait a few minutes before using it and/or reset the system if necessary (see "To Reset the System").**
- **All equipment is kept ON at all times; touching the sleep mode screen will wake up the entire system.**
- **All equipment is alarm operated - do not touch or remove equipment.**

Laptop Instructions:

Step 1 - Set up the Laptop

NOTE: You MUST provide your own laptop for the following instructions:

- 1) Plug the VGA cable (see Fig3), which is coming up from inside of the podium to the left of the touch screen, into your laptop video connector (see Fig4).



Fig3



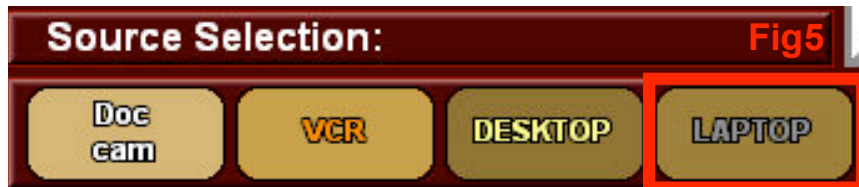
Fig4

NOTE: If internet connection is needed, use the internet cable that is hanging from the podium.

- 2) Connect the laptop power cord into the AC adapter connector and plug the other end into the power outlet next to the podium.
- 3) Turn on the laptop.

Step 2 – Using the Laptop with the Touch Screen System

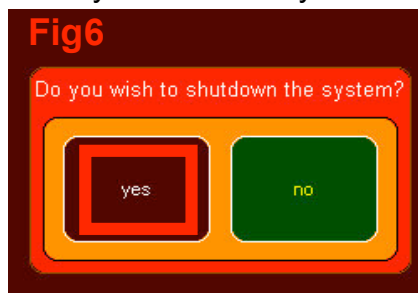
- 1) If the screen is blank, or when the touch screen system is in sleep mode screen (see Fig1), touch the screen to wake it up.
Projectors will turn on and projection screens will drop down.
- 2) Please wait a few minutes for projectors to warm up.
- 3) To use the laptop, touch the **Laptop** button located at the upper left corner of the main screen (see Fig2 and Fig5).



- 4) The computer image will appear on the projection screens.

When Finished with the Video Presentation:

- 1) Touch the **System OFF** button located on the lower right corner of the screen (see Fig2).
- 2) The system will ask you "Do you wish to shutdown the system?" (see Fig6).



- 3) Touch the **Yes** button. The projection wall screens will rise up and the projectors will turn off automatically.
- 4) Shut down the laptop.
- 5) Unplug the VGA cable from the laptop (see Fig3).

NOTE: If the projectors lamps are still on, wait a few minutes for the fan to stop cooling off, and then reset the system if it is necessary.

To Reset the System:

- 1) When the touch screen system is under the sleep mode screen (see Fig1), touch the screen to wake it up.
Projectors will turn on and projection screens will drop down.
- 2) Please wait a few minutes for projectors to warm up.
- 3) Touch the **System OFF** button located on lower right corner of screen.
- 4) The system will ask you "Do you wish to shut down the system?" (see Fig6).
- 5) Touch the **Yes** button.